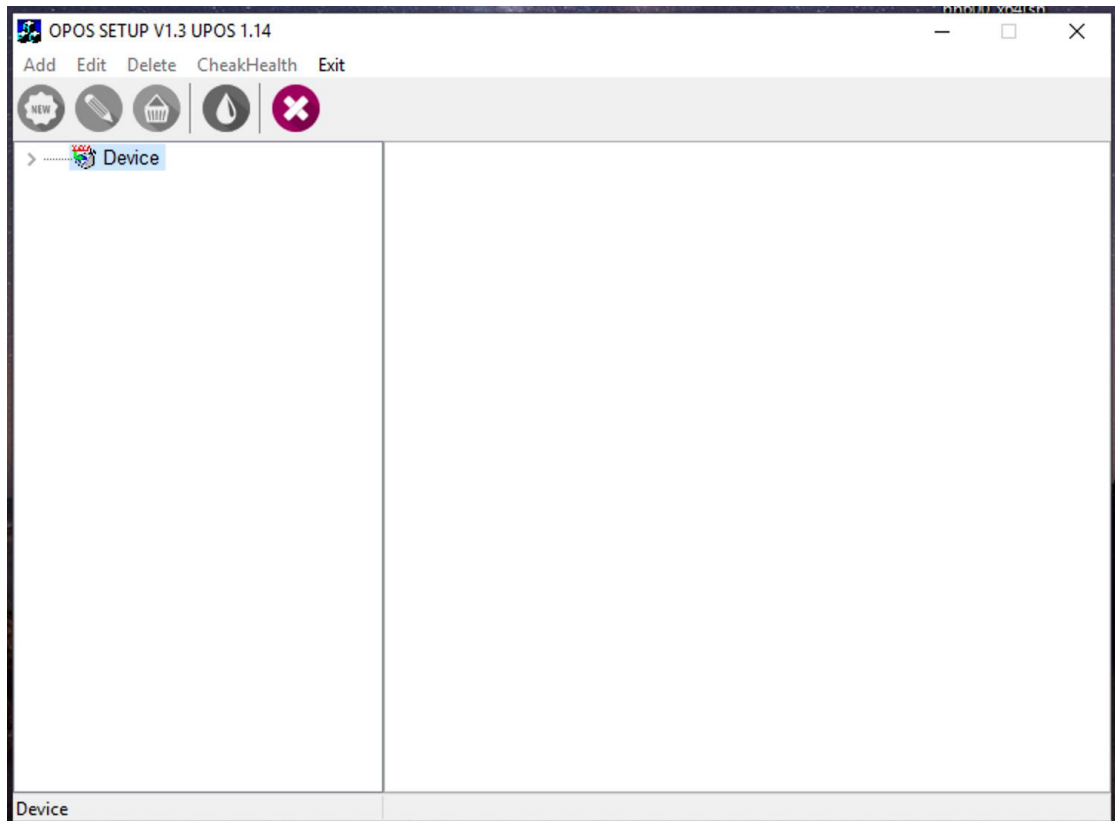
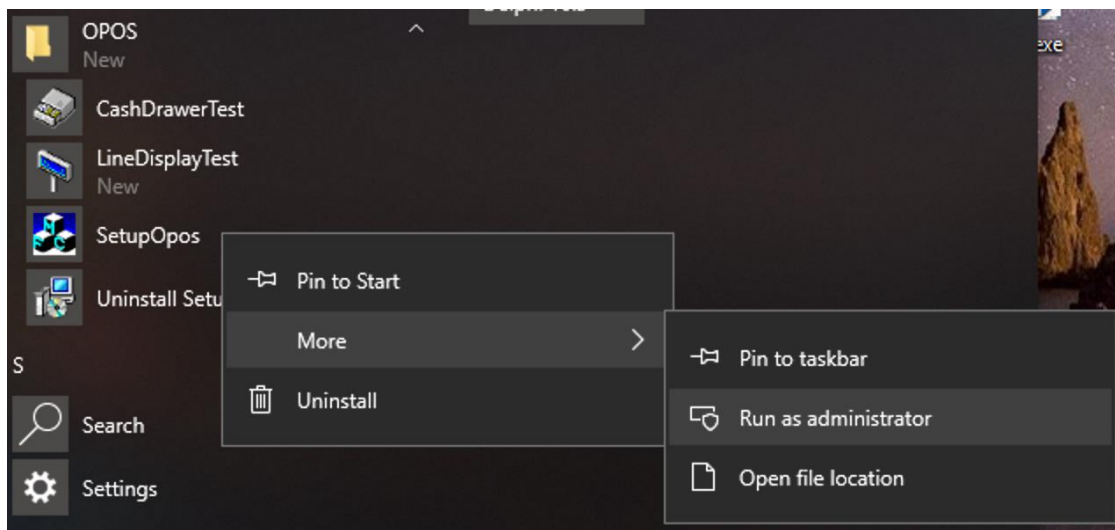
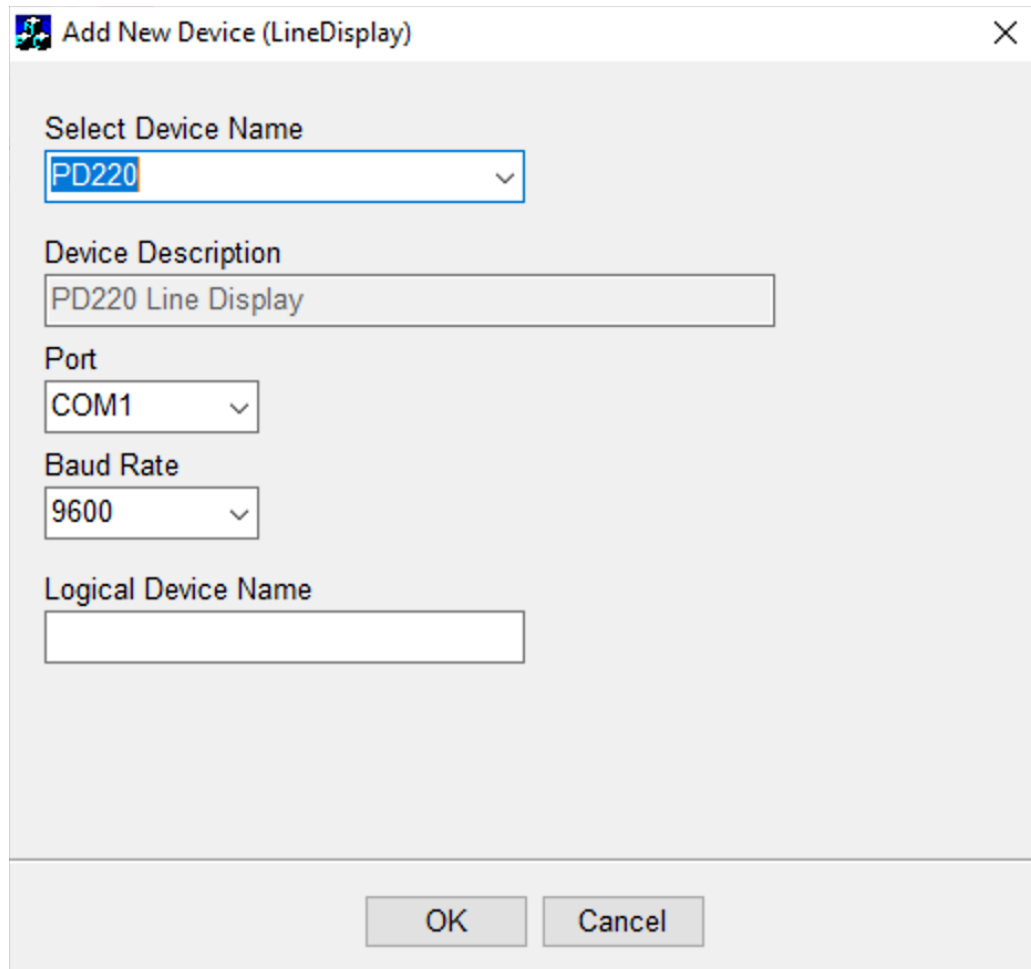
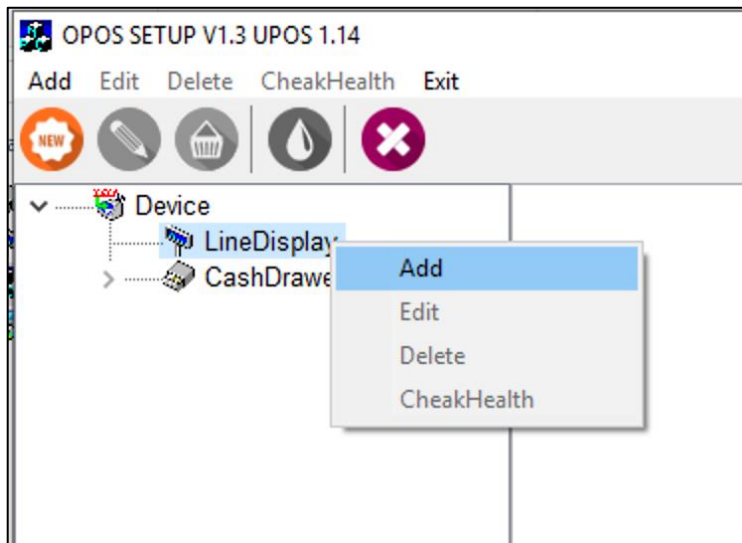


1、 OPOS Setup:

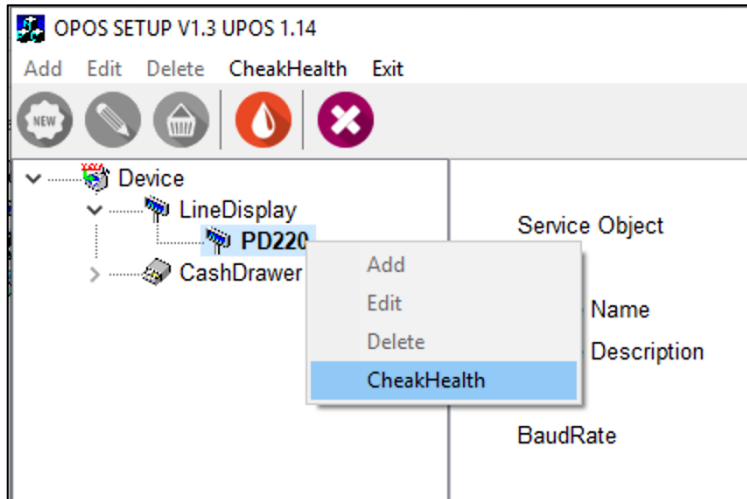
Menu[Start] → opos → SetupOPOS, Right click → More → Run as administrator, pictured:



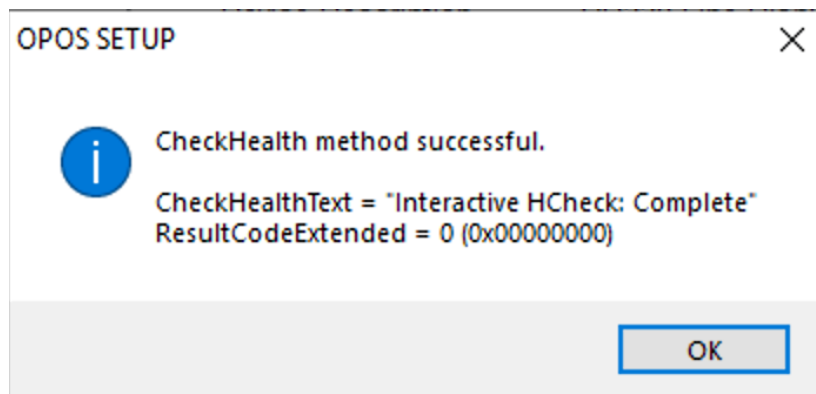
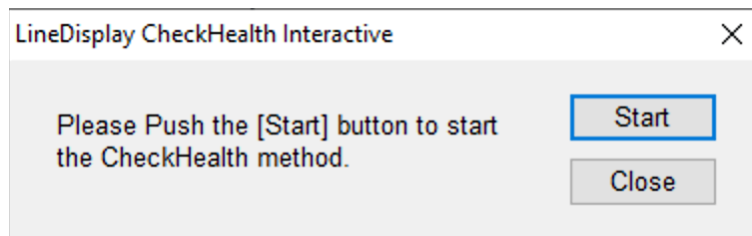
1) Add new Device: Device → LineDisplayTest → Right click → Add , pictured:



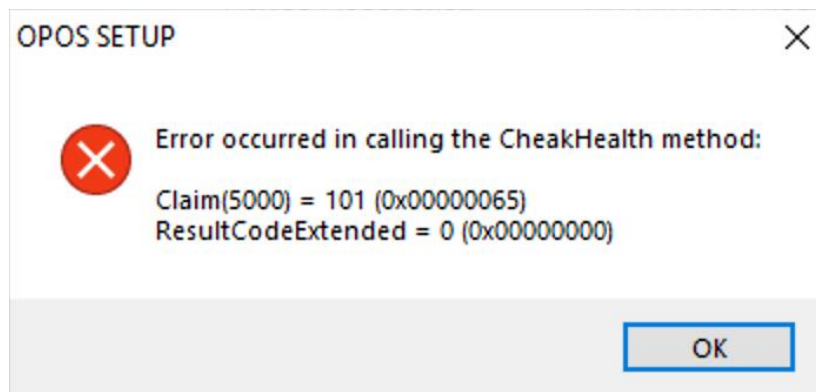
2) CheakHealth: Select device node → Right click → CheakHealth



a) If the connection of the Cash Drawer is successful, a test window will pop up, and click [start] to open the Cash Drawer successfully. Pictured:



b) If the connection of the Cash Drawer fails, an error prompt will pop up, pictured:



## 2、 OPOS Test

Menu Start → OPOS → LineDisplayTest , pictured:

