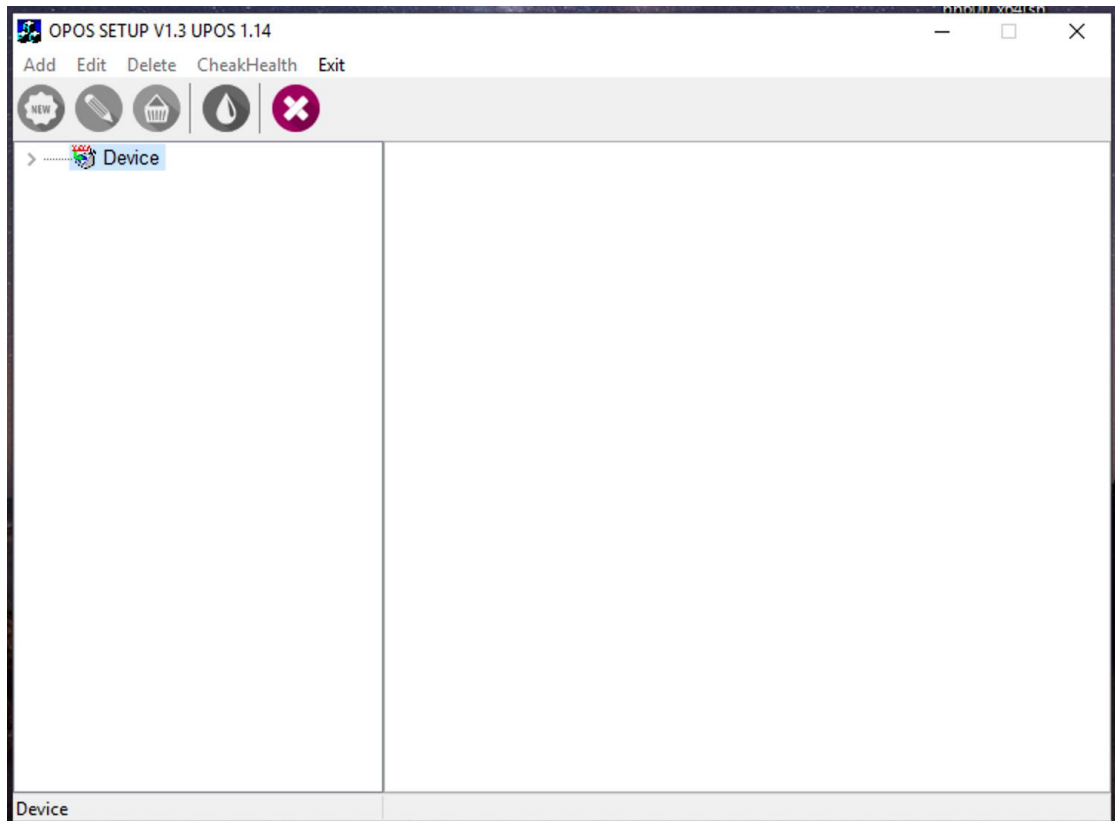
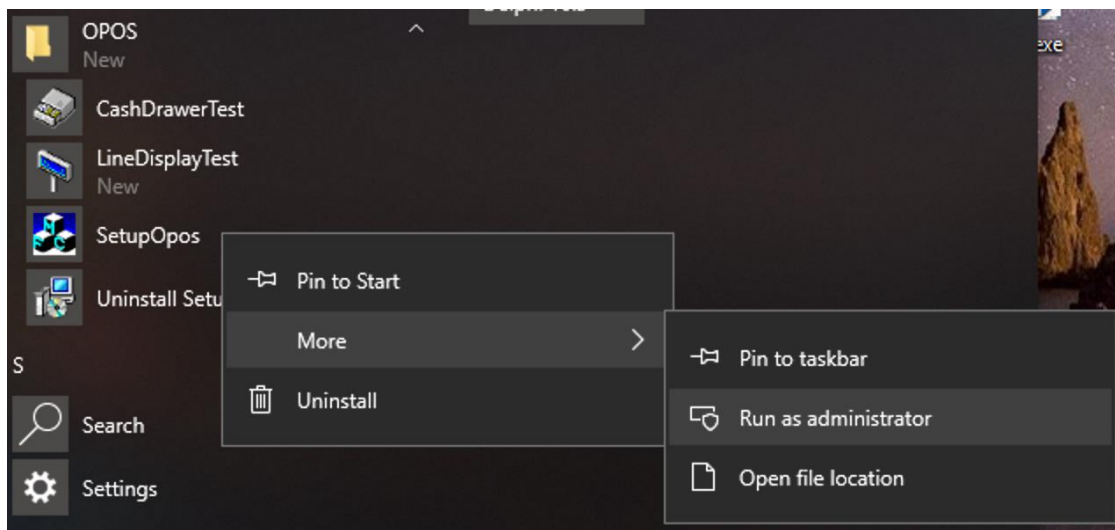
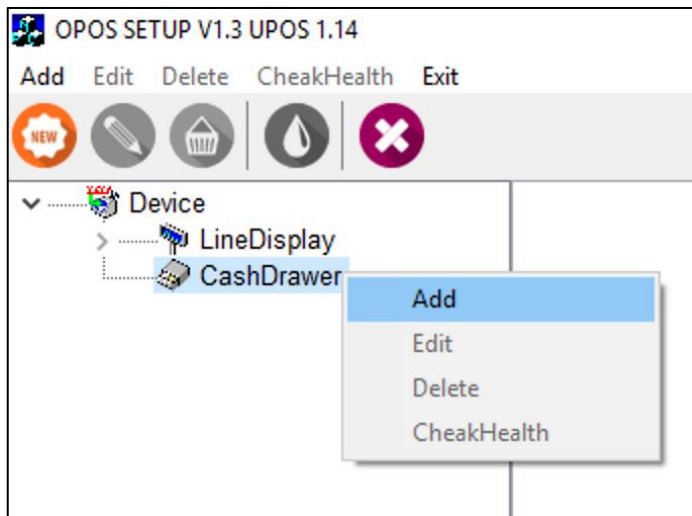


1、 OPOS Setup:

Menu[Start] → opos → SetupOPOS, Right click → More → Run as administrator, pictured:



1) Add new Device: Device → CashDrawer → Right click → Add , pictured:

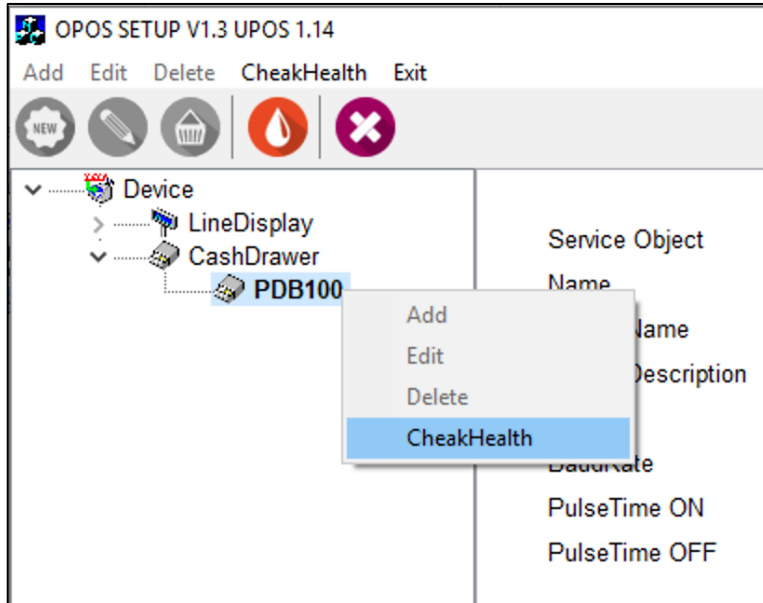
The screenshot shows the 'Add New Device (CashDrawer)' dialog box. It has a title bar with a close button (X). The dialog contains the following fields and controls:

- 'Select Device Name': A dropdown menu with 'PDB100' selected.
- 'Device Description': A text box containing 'PDB100 Cash Drawer'.
- 'Port': A dropdown menu with 'COM1' selected.
- 'Baud Rate': A dropdown menu with '9600' selected.
- 'Logical Device Name': An empty text box.
- 't1': A text box containing '100'.
- 't2': A text box containing '100'.

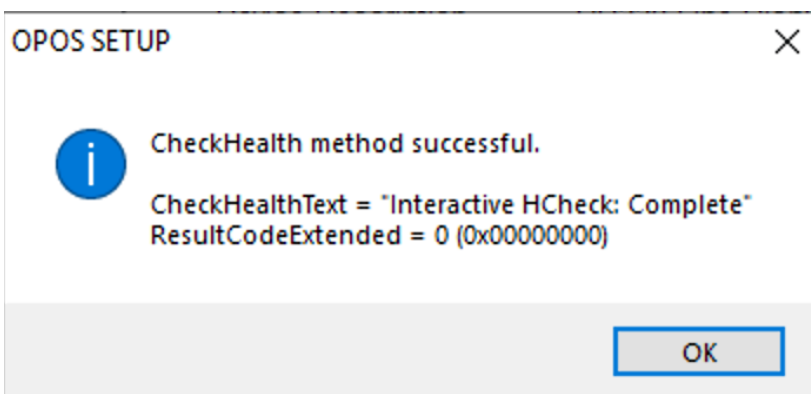
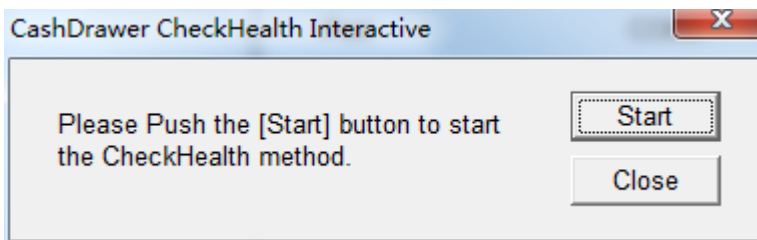
At the bottom, there is a note: '*The pulse for ON time is (t1 × 2 msec) and for OFF time is (t2 × 2 msec).' and two buttons: 'OK' and 'Cancel'.

Select the correct serial port number(Port) → Set pulse time t1 and t2 (default:100, Range: 50~250) → OK

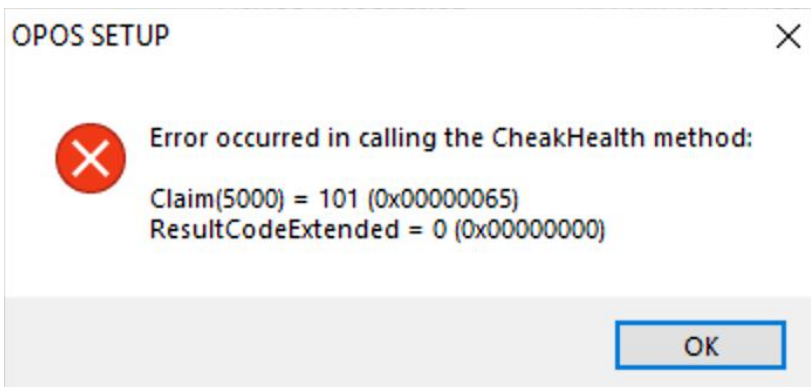
2) CheakHealth: Select device node → Right click → CheakHealth



a) If the connection of the Cash Drawer is successful, a test window will pop up, and click [start] to open the Cash Drawer successfully. Pictured:

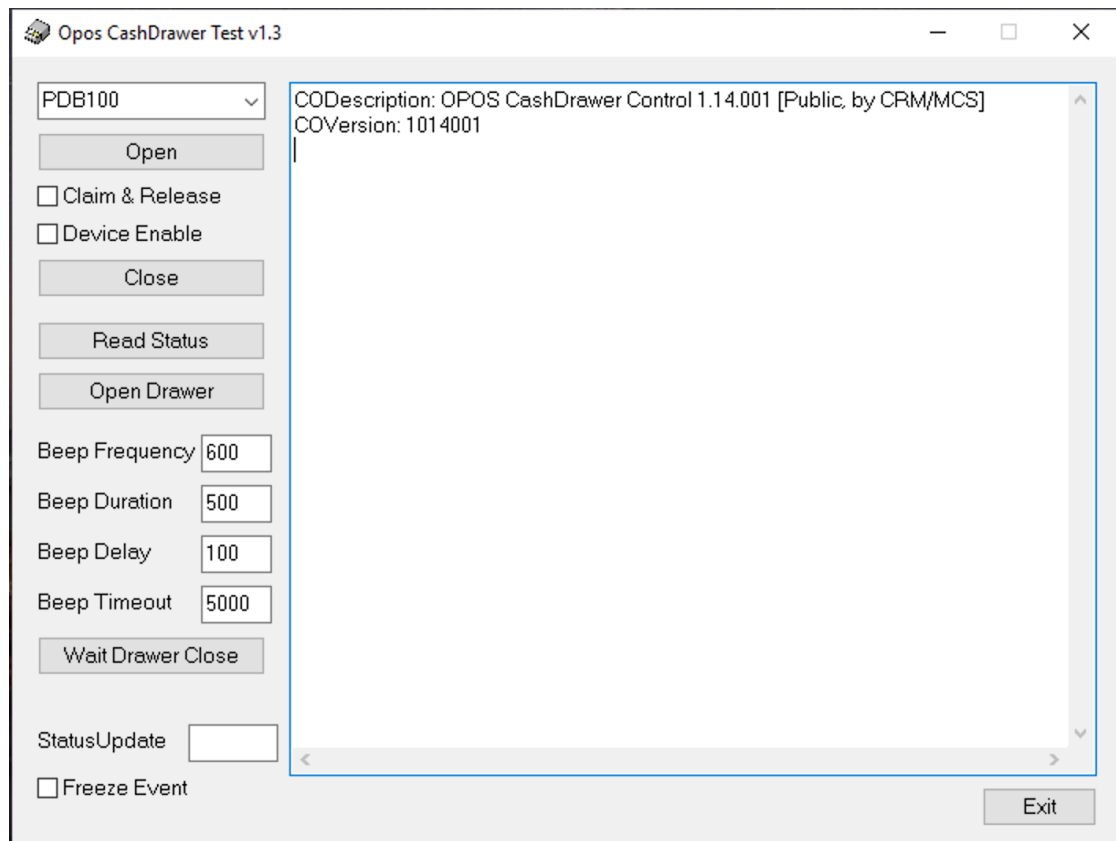


b) If the connection of the Cash Drawer fails, an error prompt will pop up, pictured:



2、 OPOS Test

Menu Start → OPOS → CashDrawerTest, pictured:



Operation steps:

a) Device connection:

Open → Claim → Device Enable

b) Functional testing:

Open Drawer	Open Cash Drawer
Read Status	Read Cash Drawer status: -1 open, 0 close
Wait Drawer Close	Wait for the cash drawer to close, the loudspeaker will beep when the cash drawer is open, and the program cannot be operated
StatusUpdate	Cash drawer status event, which automatically displays the cash drawer status when the cash drawer is opened or closed
Freeze Event	Freeze cash drawer status event. If this option is checked, the cash drawer status event will be frozen and the status will not be displayed automatically when the cash drawer status changes