



EPSON JavaPOS ADK

Installation Guide

Version 1.14.5 May 2017

Notes

- (1) Reproduction of any part of this documentation by any means is prohibited.
- (2) The contents of this documentation are subject to change without notice.
- (3) Comments and notification of any mistakes in this documentation are gratefully accepted.
- (4) This software cannot be used with other equipment than the specified.
- (5) EPSON will not be responsible for any consequences resulting from the use of any information in this documentation.

Trademarks

Microsoft®, Windows®, Windows Server® and Windows Vista® are trademarks or registered trademarks of Microsoft Corporation in the United States and/or other countries. JBuilder is a trademark of Borland Software Corporation in the United States and other countries.

Red Hat is a registered trademark of Red Hat, Inc.

SUSE is a registered trademark of SuSE Linux AG, a Novell business.

JBuilder is a trademark of Borland Software Corporation in the United States and other countries.

EPSON and ESC/POS are registered trademarks of Seiko Epson Corporation.

Java and all Java-based trademarks are registered trademarks of Oracle Corporation, its subsidiaries, and/or affiliates in the U.S. and other countries.

Other product and company names used herein are for identification purposes only and may be trademarks or registered trademarks of their respective companies.

Epson disclaims any and all rights in those marks.

The Bluetooth® word mark and logos are registered trademarks owned by Bluetooth SIG, Inc. and any use of such marks by SEIKO EPSON is under license. Other trademarks and trade names are those of their respective owners.

Copyright (c) 2005-2017 Seiko Epson Corporation

Contents

Chapter 1 Introduction	1
Chapter 2 Caution.....	2
Chapter 3 Installation	3
3.1 Install Java	3
3.2 Install Java Advanced Imaging (JAI)	3
3.3 Configure your Java Virtual Machine.....	4
3.4 Pre-Installation checks	5
3.5 Introduction	6
3.6 License Agreement	7
3.7 Selecting Components to Install	8
3.8 Pre-Installation Summary	9
Chapter 4 Uninstalling.....	10
4.1 Changing Installed Items and Starting Uninstall.....	10
4.2 Confirm uninstallation.....	10
4.3 Delete Electronic Journal data files	10
Chapter 5 Silent Installation/Uninstallation	11
5.1 Running Installation.....	11
5.2 Running Uninstallation.....	11

Chapter 1 Introduction

The following hardware and software configuration is required when installing EPSON JavaPOS ADK. For linux user, Please refer to the “EPSON JavaPOS ADK Installation Guide for Linux.txt” for downloads and detailed installation instructions.

- Computer
 - IBM PC/AT compatible
 - Please follow the specifications recommended by your OS for system requirements (CPU, RAM, etc.).
 - A minimum of 11 MB of available hard disk space is required.
- Supported Operating systems
 - Windows Vista (Business/Enterprise/Ultimate) Service Pack 2
 - Windows Server 2008 Service Pack 2
 - Windows Server 2008 R2 Service Pack 1
 - Windows 7 (Professional/Enterprise/Ultimate) Service Pack 1
 - Windows Embedded Standard
 - Windows Embedded Standard 7
 - Windows 8
 - Windows 8.1
 - Windows 10
 - Windows Server 2012
 - Windows Server 2012 R2
 - Red Hat Enterprise Linux 6.6
 - Red Hat Enterprise Linux 7.0
 - SuSE Linux Enterprise 11.3
 - SuSE Linux Enterprise 12.0
 - CentOS Linux6.6
 - CentOS Linux7.0
 - Ubuntu 14.04
- Java Virtual Machine
 - Java Standard Edition 7 Update 80
 - Java Standard Edition 8 Update 101
 - See “3.1 Install Java”

Chapter 2 Caution

1. In case it is already installed JavaPOS 1.14.2 or previous version, uninstall it first before installing JavaPOS 1.14.3 or later.
2. Please execute the following files by Administrator privileges when you run SetupPOS with Windows Vista or Windows Server 2008.
`<INSTALLDIR>\SetupPOS\SetupPOS.bat`
3. Please connect a printer after installing JavaPOS driver.

Chapter 3 Installation

3.1 Install Java

Java must be installed on your system before you can run the installer. This can be downloaded from <https://java.com/>.

Users: Install the Java Runtime Environment (JRE).

Developers: Install the Java Development Environment (JDK).

Note that Java version 1.8.0_101 or higher is required.

3.2 Install Java Advanced Imaging (JAI)

Java Advanced Imaging (JAI) must be installed in order to use the JavaPOS ADK. This is necessary for printing BMP files on the CheckScanner. This is not included with the JavaPOS ADK installer.

Please refer to the following website for downloads and detailed installation instructions:

<http://www.oracle.com/technetwork/java/current-142188.html>

Users: Install the Java Runtime Environment (JRE) version.

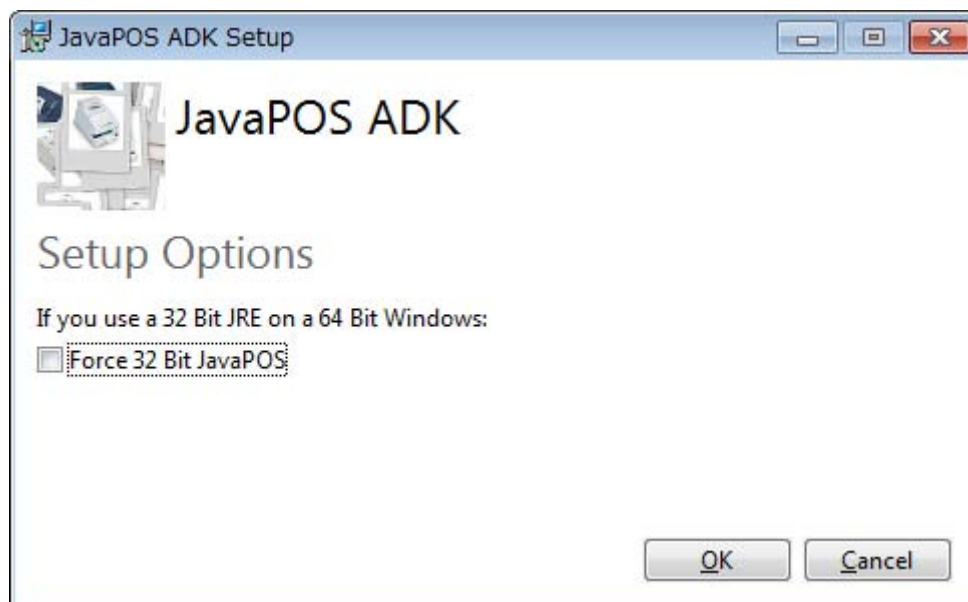
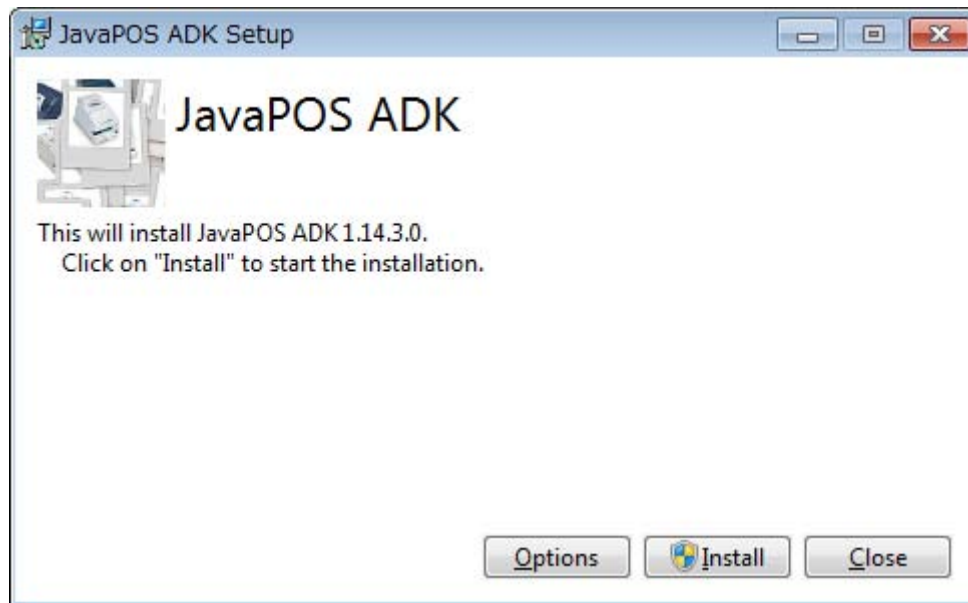
Developers: Install the Java Development Environment (JDK) version.

To install JAI with 64-bit Java on Windows operating systems, download and run the jai-1_1_2-lib-windows-i586.exe installer. After installation, copy jai_codec.jar and jai_core.jar into the 64-bit Java's ext folder.

3.3 Configure your Java Virtual Machine

In case using Java Virtual Machine 32bit version in 64bit OS, enable “Force 32bit JavaPOS” from “Options”.

Click Install to continue installing the software.



3.4 Pre-Installation checks

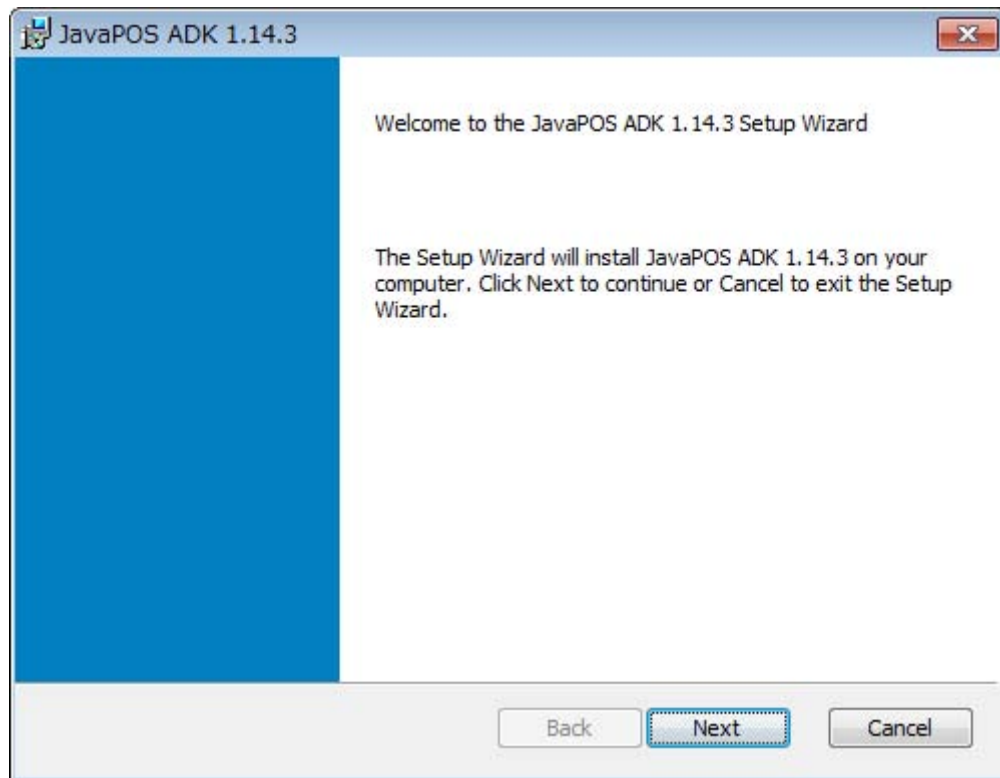
The following is checked before proceeding with the install:

- If the system already has the same version of the software installed, then the installer will display an error message and exit.

3.5 Introduction

Following window screen is Setup Wizard of JavaPOS ADK.

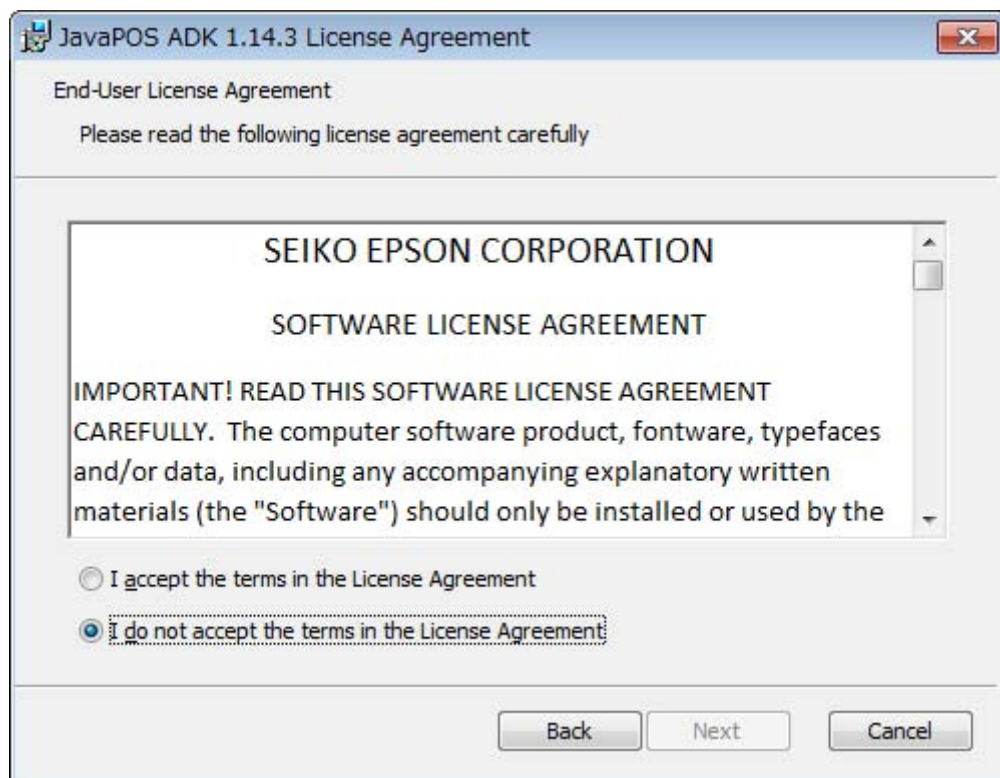
Click Next to continue installing the software.



3.6 License Agreement

The user must agree to the License Agreement to continue with the installation. After reading the entire agreement, select “I accept the terms of the License Agreement” and then click Next.

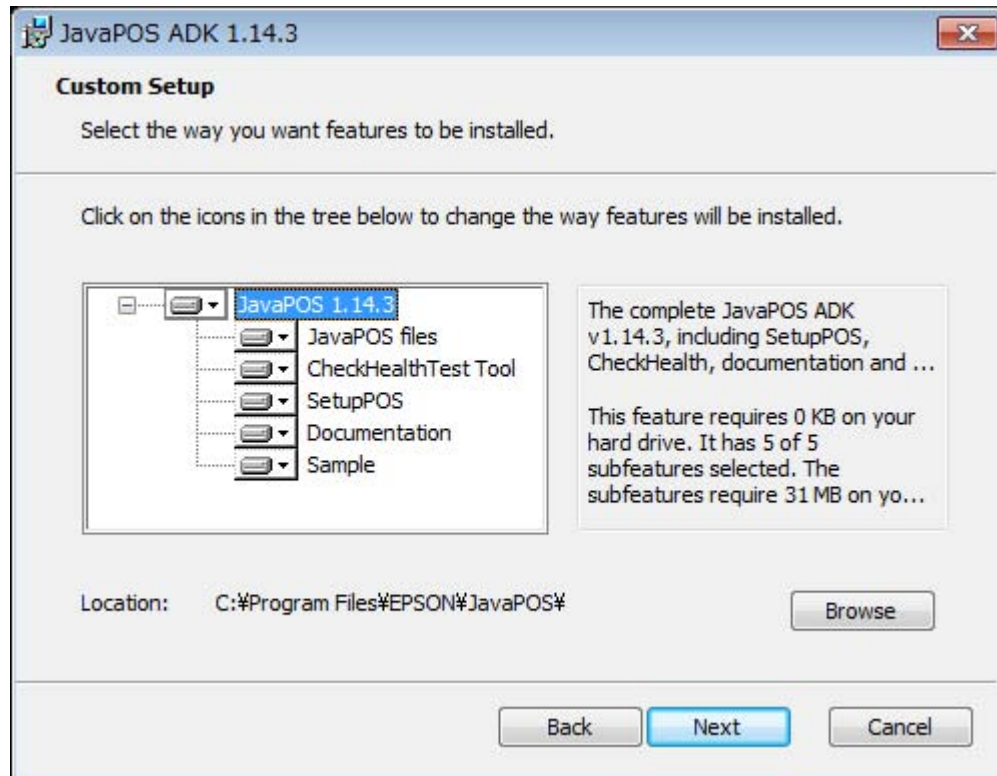
If “I accept the terms of the License Agreement” is not selected, Next is not enabled.



3.7 Selecting Components to Install

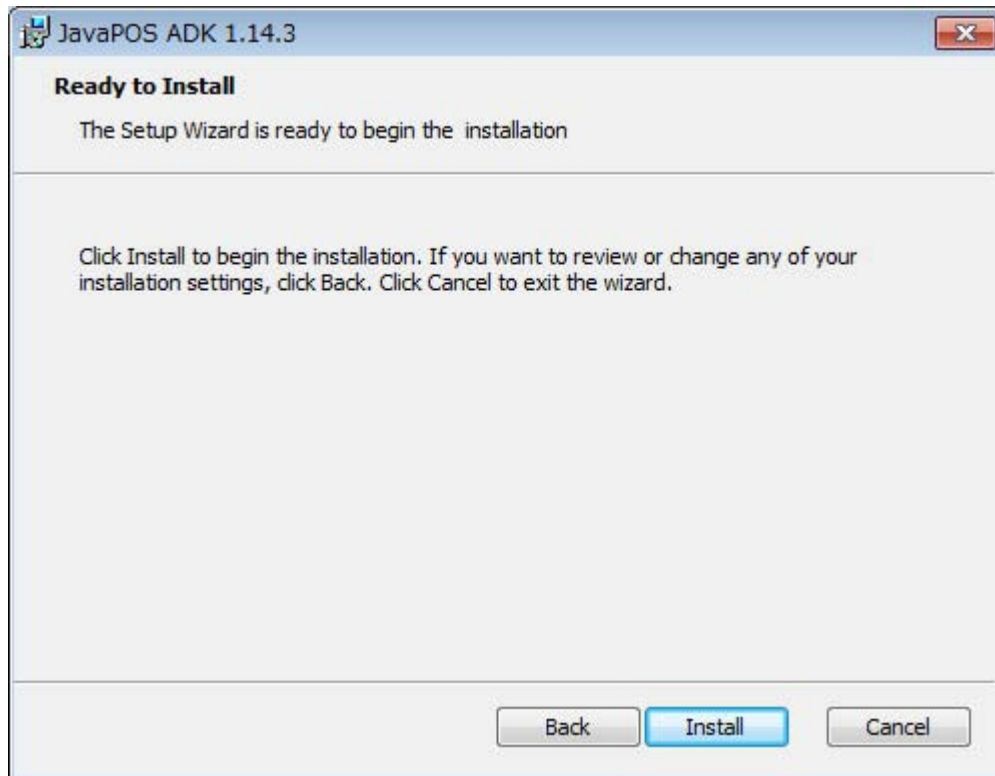
Select the components to install and click Next.

Choose “JavaPOS files” at least.



3.8 Pre-Installation Summary

The following window screen is the confirmation message before installation. If the settings are correct, click Install.



Chapter 4 Uninstalling

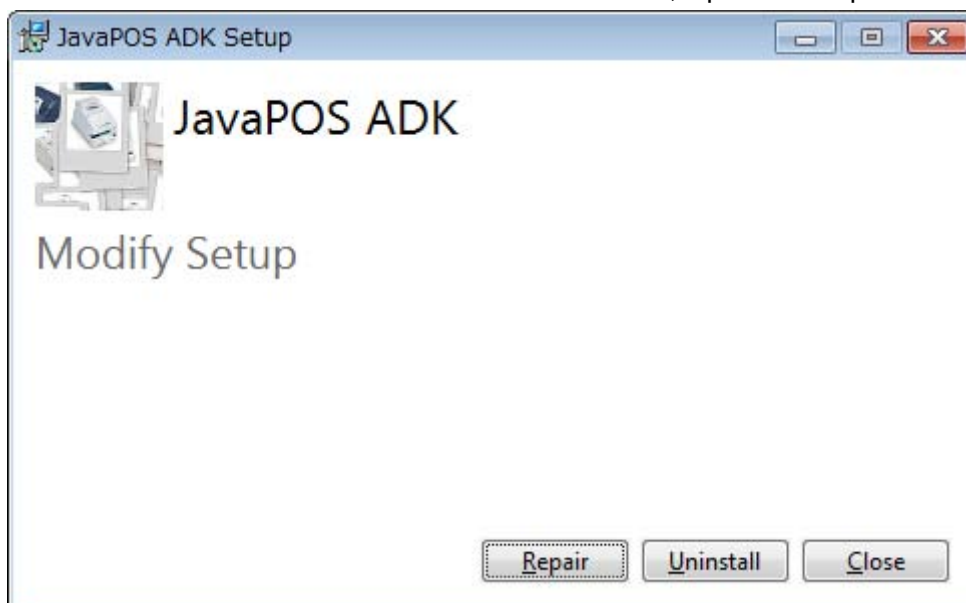
4.1 Changing Installed Items and Starting Uninstall

Double-click the Add or Remove Programs icon in Control Panel, and click Change or Remove for EPSON JavaPOS ADK 1.14.3 or later.

4.2 Confirm uninstallation

Click Uninstall button to start uninstalling.

When it needs to restore the deleted files, press “Repair” button.



4.3 Delete Electronic Journal data files

The uninstaller does not remove data files created for the Electronic Journal. If these files have been created, they must be deleted manually.

Chapter 5 Silent Installation/Uninstallation

5.1 Running Installation

Using the command prompt, append option to the installer file and run it.

Silent Installation is supported JavaPOS1.14.5 or later.

(In case using Java Virtual Machine 32bit version in 32bit OS)

Example:

```
EPSON_JavaPOS_1.14.5.exe /q DisplayInternalUI="no" InstallDirx86="C:\ProgramFiles\EPSON"
```

(In case using Java Virtual Machine 32bit version in 64bit OS)

Example:

```
EPSON_JavaPOS_1.14.5.exe /q DisplayInternalUI="no" InstallDirx86="C:\ProgramFiles (x86)\EPSON"
```

(In case using Java Virtual Machine 64bit version in 64bit OS)

Example:

```
EPSON_JavaPOS_1.14.5.exe /q DisplayInternalUI="no" InstallDirx64="C:\ProgramFiles\EPSON"
```

5.2 Running Uninstallation

Using the command prompt, append option to the uninstaller file and run it.

Example:

```
EPSON_JavaPOS_1.14.5.exe /uninstall /quiet
```